



SAMUDRA CIPTA ENGINEERING

Empowering Your Future with Innovative Electrical Solutions

Jl. Mayjen Bambang Yuwono, Ruko Center Point Blok C, No. 04, Kemangsen, Kec. Balongbendo,
Kab. Sidoarjo 61263, Jawa Timur, Indonesia
(031) 8985-009 / (+62) 8789-4045-628
sales1@shinyuelectric.com / www.shinyuelectric.com



Technical Data Sheet

ATS AMF 170 kVA

Automatic Transfer Switch (ATS)
Automatic Mains Failure (AMF)
170 kVA



General Information:

Product Name	ATS AMF Panel 170 kVA
Manufacturer	Shinyu Electric
Model Number	ATSAMFSE170kVA

Electrical Specifications:

Rated Power Capacity	170 kVA
Rated Voltage	380 - 480 Volt
Frequency: 50/60 Hz	50 / 60 Hz
Control Voltage	230 VAC
Switching Time	<5 secon
Power Consumption	50 W (standby mode)

Switching Mechanism:

Type	Motorized Change Over Switch
Model	[Change Over Switch Model Number] or Circuit Breaker
Rated Current	250 Amperes
Operating Mechanism	Electrically operated with manual override

Protection:

Overload protection	Yes	3 phase generator sensing	Yes
Generator overload protection (kW)	Yes	3 phase mains (utility)	Yes
Generator/load current monitoring	Yes	Generator/load power monitoring (kW, kV A, kV Ar, pf)	Yes
Engine speed protection	Yes	Comprehensive warning, electrical trip or shutdown protection upon fault condition	Yes
Mains/generator A/C system selection	Yes		
Over-voltage Protection	Yes	Over-current Protection	Yes
Under-voltage Protection	Yes	Short-circuit Protection	No

Battery Charger:

Type	Automatic Battery Charger
Input Voltage	230 V AC
Output Voltage	12 V DC / 24 V DC
Charging Current	Up to 5 A
Protection:	Overcharge protection, short-circuit protection, reverse polarity protection
Indications	Charging status LED indicators

Metering:

Current	Phase & Netral
Voltage	Average, Phase-Phase, Phase-Neutral
Frequency	yes
Active power	P, P1, P2, P3, KW, KVA
Calculated neutral current	Yes
Energy	Active, Reactive, Real
Reactive power	Q, Q1, Q2, Q3
THD	Volt & Current

Indication Lamp

Voltage Indicator Main (Utility)	Red, Green Yellow Pilot Lamp Diameter 22 mm 220 VAC
Voltage Indicator Generator	Red, Green Yellow Pilot Lamp Diameter 22 mm 220 VAC
Mains On - Off Indicator	Green - Red Pilot Lamp with name tag
Generator On - Off Indicator: Red LED lamp	Green - Red Pilot Lamp with name tag

Mode of Operation:

Automatic Mode	In this mode, the panel automatically switches between the main power supply and the generator based on the availability and quality of the main power. If a power failure is detected, the panel automatically starts the generator and transfers the load to it. Once the main power is restored, the panel will switch the load back to the main power and shut down the generator.
Manual Mode:	In this mode, the user can manually control the switching between the main power supply and the generator. This is useful for maintenance or in situations where automatic operation is not desired. The manual mode includes an easy-to-use interface for manual switching.

Controller Module:

Type	Microprocessor-based Controller
Model	DSE 4520 MKII - Deep Sea
Features	<ul style="list-style-type: none"> • Auto Start and AMF mode in one module (DSE4520 MKII only) • J1939-75 support and CAN alarm ignore function • Alternator frequency & CAN speed sensing in one variant • Largest back-lit icon display in its class (configurable as text display) • Heated display option • Real time clock provides accurate event logging • Fully configurable via the fascia or PC using USB communication • Extremely efficient power save mode • 3 phase generator sensing • 3 phase mains (utility) sensing (DSE4520 MKII only) • Compatible with 600 V ph to ph nominal systems • Generator/load power monitoring (kW, kV A, kV Ar, pf) • Accumulated power monitoring (kW h, kVA h, kVAr h) • Generator overload protection (kW) • Generator/load current monitoring and protection • Fuel and start outputs (configurable when using CAN) • 4 configurable DC outputs • 5 V output • Configurable fuel & crank outputs • 3 configurable analogue/digital inputs • 4 configurable digital inputs • Configurable staged loading outputs • 3 engine maintenance alarms • Engine speed protection • Engine hours counter • Engine pre-heat • Engine run-time scheduler • Engine idle control for starting & stopping • Tier 4 engine instrumentation screens • Battery voltage monitoring • Start on low battery voltage • Configurable remote start input • 1 alternative configuration • Comprehensive warning, electrical trip or shutdown protection upon fault condition • LCD alarm indication • Coolant temperature pre-alarm • Event log (50) • Fuel solenoid pulling circuit • On-screen line diagram on/off functionality • Configurable CAN instrumentation (10) • Water in fuel digital input • Tank bund alarm digital input • Generator at rest output • ECU periodic wake-up for information retrieval • Back-light power-save mode • Adjustable delay crank timer • Pre/post heat functionality • Overload protection • Mains/generator A/C system selection • Output timer for external audible alarm • Accommodates a wide range of senders and temperatures

Environmental Specifications:

Operating Temperature	-10°C to 50°C
Storage Temperature	-20°C to 70°C
Humidity	0% to 95% non-condensing
Ingress Protection	IP4X

Mechanical Specifications:

Dimensions (HxWxD)	1000 mm x 700 mm x 400 mm
Weight	68 kg
Material:	
Enclosure	
Doors	Powder-coated steel, thickness 2.0 mm, with rubber gasket for sealing
Frame	Powder-coated steel, thickness 2.0 mm, for enhanced structural strength
Busbars	Power Cable 4P 200A
Insulators	High-grade, flame-retardant thermoplastic material
Hardware	Steel bolts, nuts, and washers with High Grade

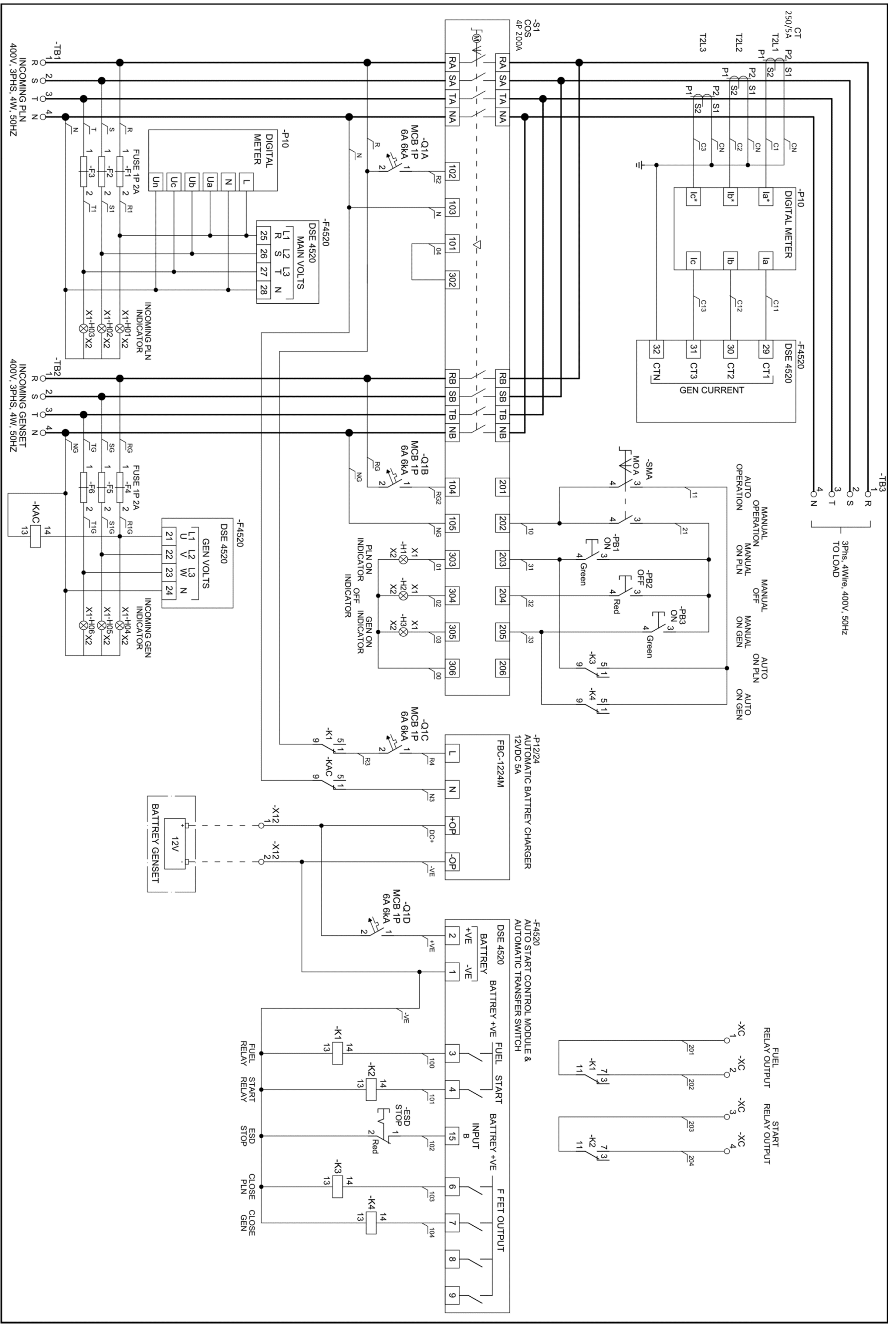
Busbars:

Material	High-quality electrolytic copper
Insulation	Heat-shrink sleeve for additional protection
Size	Designed according to IEC standards for required current capacity
Design	Engineered to minimize energy loss and enhance power transfer efficiency

Installation and Maintenance:

Mounting	Wall-mounted
Cable Entry	Bottom and top entry options
Maintenance Access	Front access for easy maintenance
Installation Manual	Included
Training	Provided upon request
Standards	IEC 60947-6-1, IEC 60364-1

**SCHEMATIC DIAGRAM
PANEL ATS-AMF 170kVA**



Data dapat berubah sewaktu-waktu, hubungi kami untuk lebih rinci